

Collaboration, Engagement and the Promotion of Community Wellbeing

Moderator: Bernie Blais

Panelist Introduction

Moderator: Bernie Blais

Speakers:

- Karen Farbridge: Mayor, City of Guelph
- Norman Taylor: Senior Advisor to the Deputy Minister Corrections and Policing and Saskatchewan
- Bryan Larkin: Chief of Police, City of Guelph
- Ross Kirkconnell, Executive Director Guelph Family Health Team

Presenter Disclosure

- **Session Name:** Collaboration, Engagement and the Promotion of Community Wellbeing
- **Presenters:** Bernie Blais (moderator), Karen Farbridge, Norman Taylor, Bryan Larkin, Ross Kirkconnell,
- **Relationships with commercial interests:**
 - Not Applicable

Disclosure of Commercial Support

- This session has received no commercial support

Mitigating Potential Bias

- Not applicable

Session Objectives

1. Gain foundational knowledge of the interrelationships between health care, health promotion, community development and public safety and develop an understanding of how accelerating collaboration between these areas will achieve sustainable change and improve connections to services.
2. Leave the session with concrete examples of how to apply this collective impact approach to health, community safety and wellbeing in their own communities.



Guelph Community Wellbeing Initiative

A Conversation About What Matters

Karen Farbridge
Mayor, City of Guelph

500

66

200

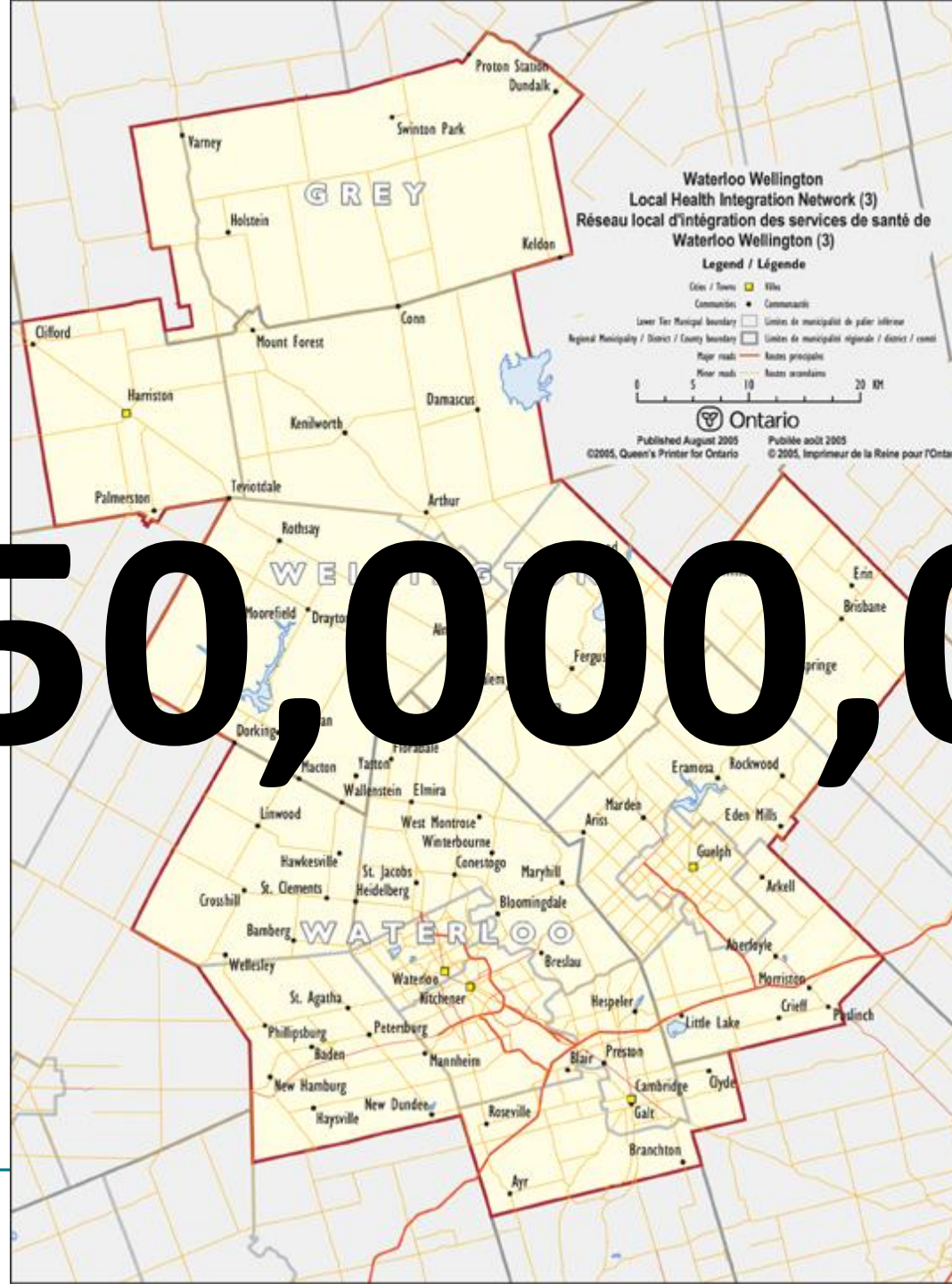
75%

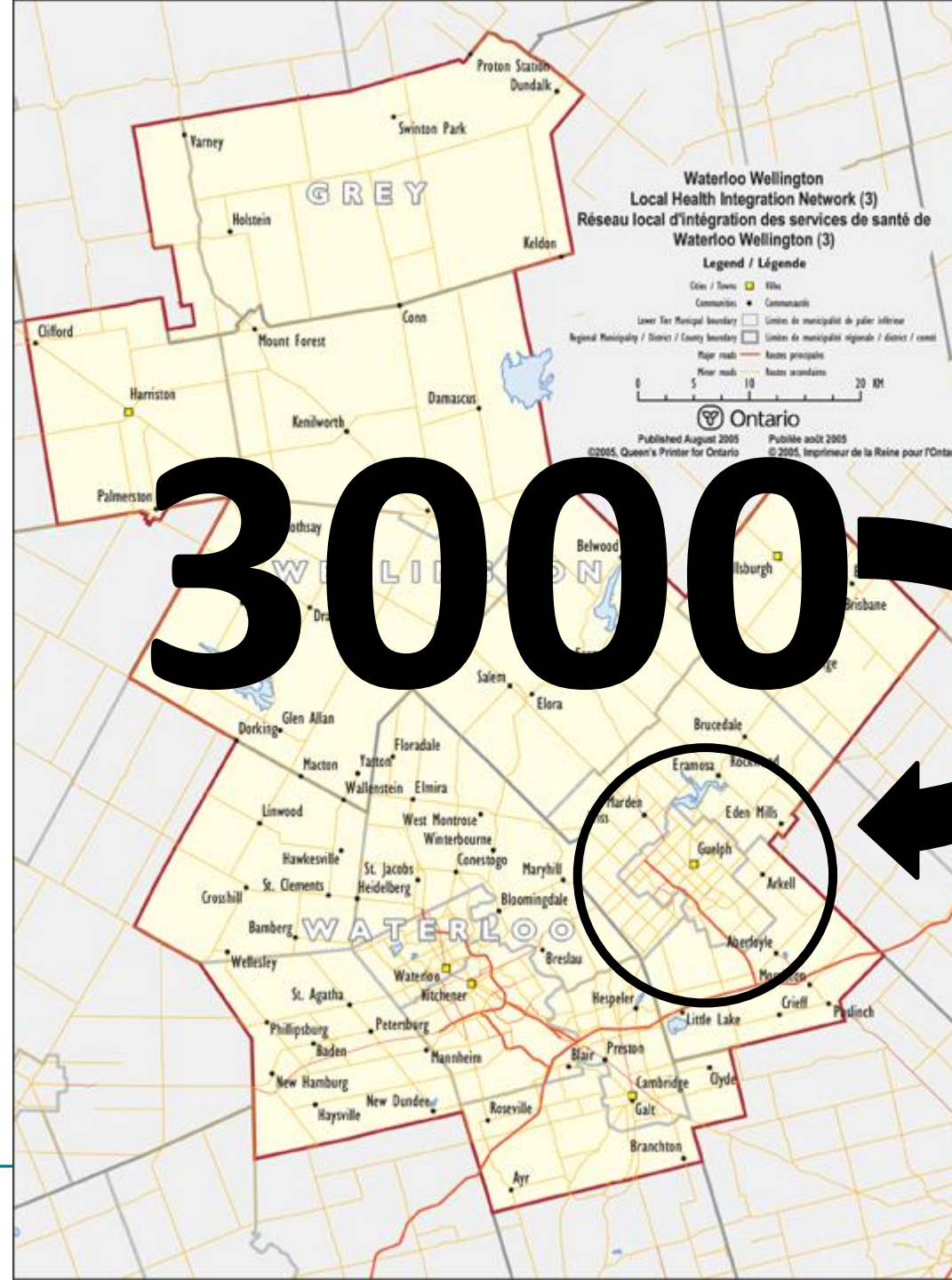


5%



\$750,000,000







brooke williams

*"It cost us one
million dollars
not to do
something about
Murray,"*

JOSEPH E. STIGLITZ

WINNER OF THE NOBEL PRIZE IN ECONOMICS

THE PRICE OF INEQUALITY

HOW TODAY'S DIVIDED SOCIETY
ENDANGERS OUR FUTURE

“If America’s growing inequality leads to more spending to prevent crime, it will show up as an increase in GDP, but no one should confuse that with an increase in well being.”



Community Vitality



Democratic
Engagement



Education



Environment



Healthy Populations



Time Use



Living
Standard



Leisure and
Culture



Canadian
Index of
Wellbeing



“You are leading the way!”

Charles E. Pascal
Professor
University of Toronto

*“This is a great example of how
“smartness” can reinforce our
“caring.”*

David Johnston
Governor General of Canada

HealthLinks





GWELLBEING DAY

SUNDAY, SEPTEMBER 22

A day for Guelph residents to focus on their mental, social and physical well-being!

ANYTIME, ANYWHERE BE ACTIVE—YOUR WAY!



Connect with others for a walk, go for a family bike ride, play a pickup game of soccer, visit a community park or explore one of Guelph's many trails!

Guelph Community Wellbeing Initiative
A Conversation About What Matters
guelphwellbeing.ca



TELL US WHAT YOU DID!

Post your picture, story, or video

 **Guelph Community Wellbeing**
 **#guelphwellbeing**

Or email Louise Daw at louise.daw@guelph.ca or drop them off at City Hall, 1 Carden Street.

Prizes will be drawn in each category (photo/story/video)

Please note: Photos, stories and/or videos may be used for the Community Wellbeing Initiative.

Personal information, as defined by the Municipal Freedom of Information and Protection of Privacy Act (MFIPPA) is collected under the authority of the Municipal Act, 2001, and in accordance with the provisions of MFIPPA. Personal information provided to the City of Guelph may be used for the purpose of promoting the Community Wellbeing Initiative. For information about the Community Wellbeing Initiative please contact The Project Manager, Louise Daw at: 519-822-1260 x 6521 or louise.daw@guelph.ca. If you have questions about this collection; use, and disclosure of this information, contact the City of Guelph's Access, Privacy and Records Specialist at 519-822-1260 x 2349 or tina.mckinnon@guelph.ca.



Building Partnerships to Reduce Crime

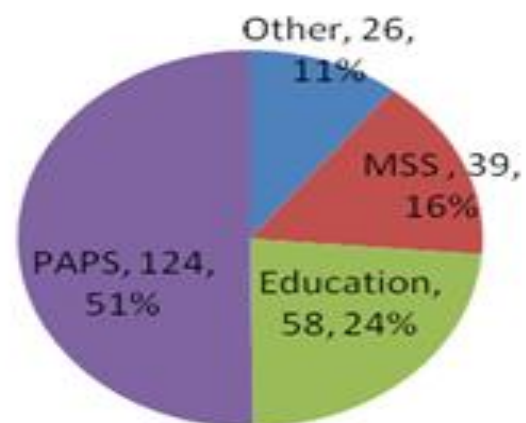
Collaboration, Engagement, and the Promotion of Community Wellbeing

Norm Taylor

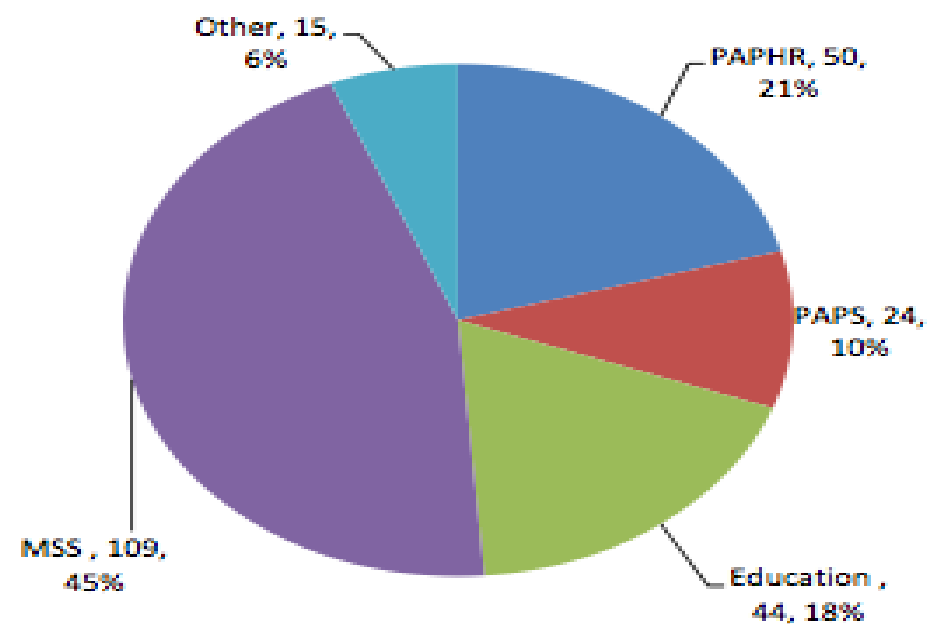
Senior Advisor to the Deputy Minister Corrections and Policing and Saskatchewan Future of Policing Consultant
Consultant to the Ontario Working Group on Collaborative Risk-Driven Community Safety



Major originators



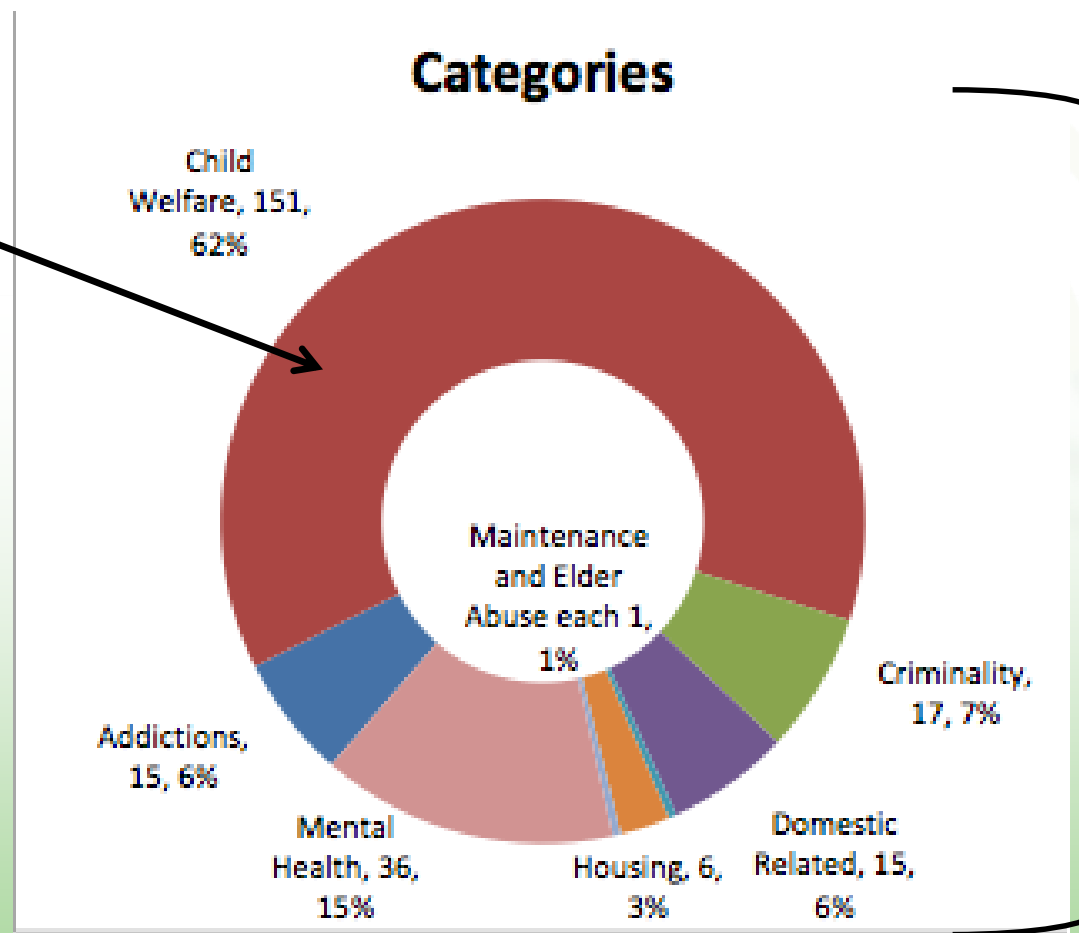
Lead agencies



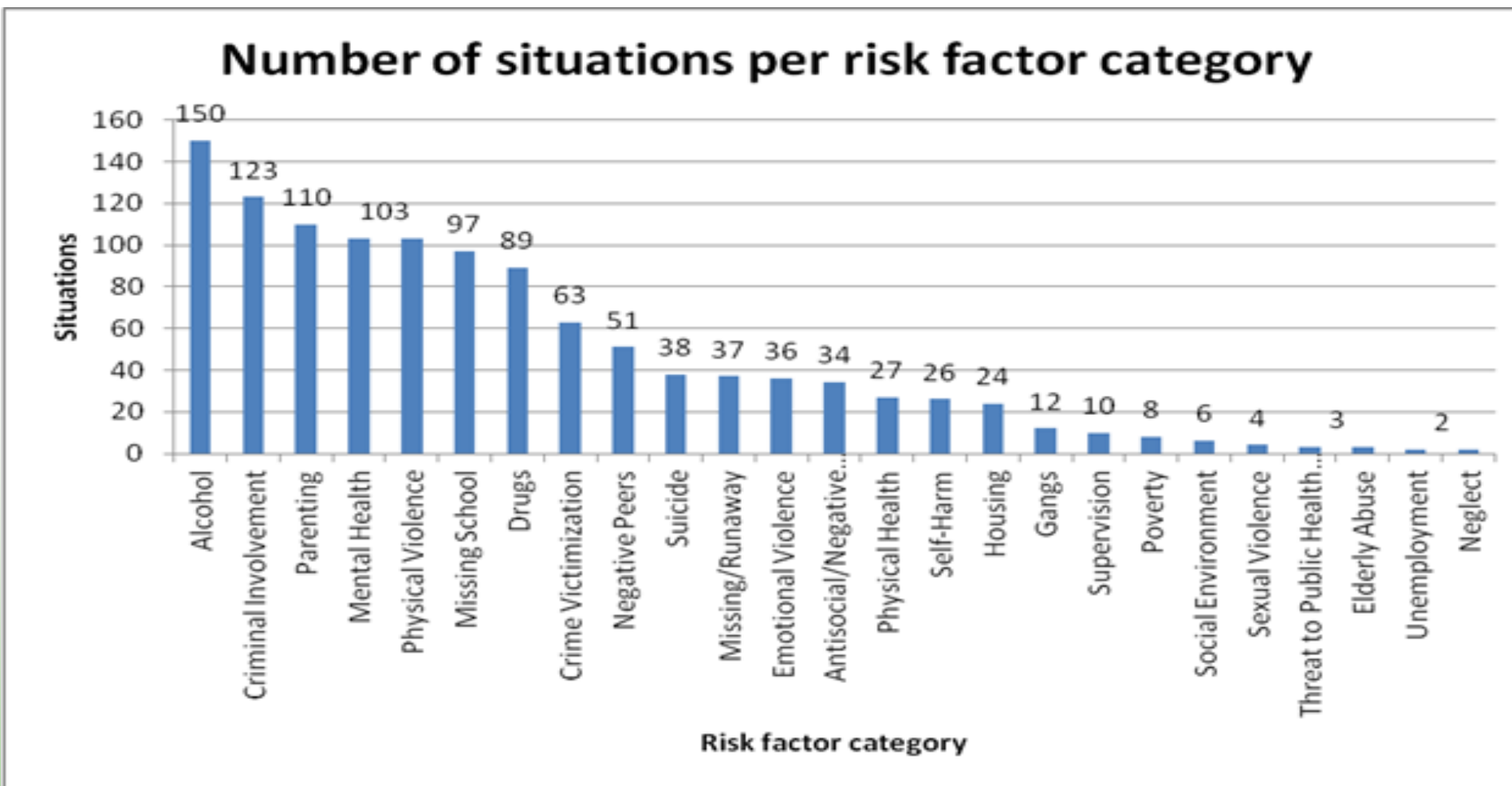


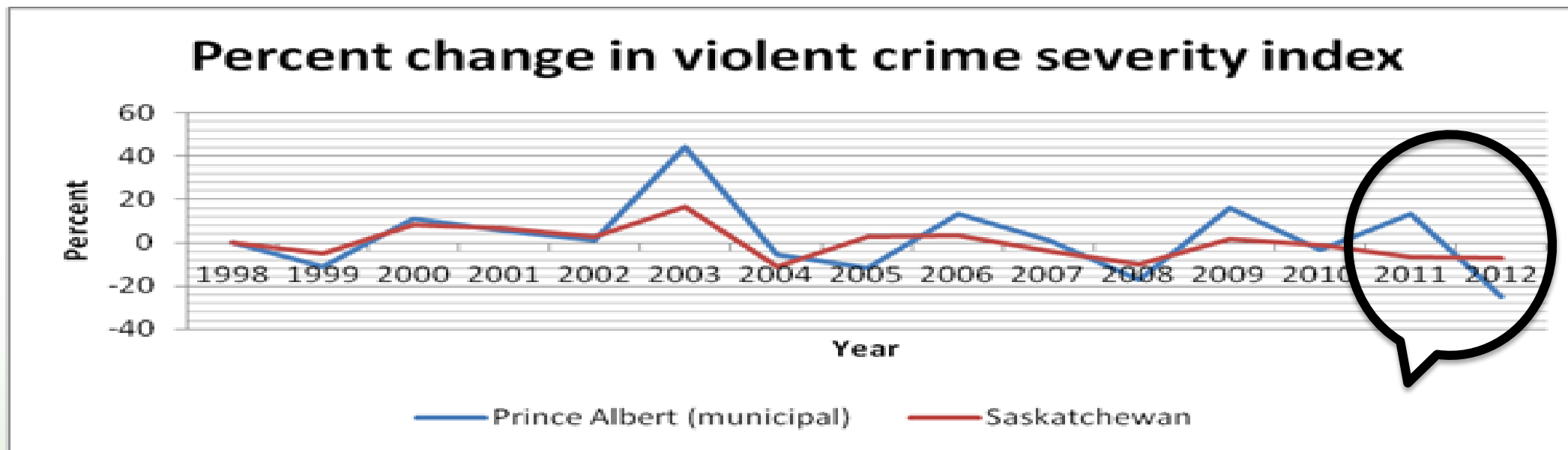
What are we Learning from this Collaborative Risk-Driven Approach to Community Safety and Wellness?

In approx 40%
of MSS
situations,
criminality is a
hidden risk
factor



In over 80% of
all situations,
imminent risk
to children is a
hidden risk
factor





The cumulative Violent Crime Reduction in Prince Albert now stands at -37% since the inception of the CMPA Hub.

This represents a reduction that is 3.4 times greater than the 11% reduction realized across the province in the same period.



The Four Filter Approach to Respecting Privacy in Balance with Individual and Community Safety

1. **Originating agency** responsible to address situations in the normal course of business, and/or through existing bi-lateral collaboration – Hub not required.
2. **Overview of situation with de-identified information** only – discussion to achieve consensus of experts as to acutely elevated risk and potential needs and benefits of multi-agency intervention (if yes, a de-identified situation entry is created for later analysis and tracking, including risk factors).
3. **Limited information shared to identify most appropriate lead agency and assisting agencies** – no records taken by non-involved Hub participants.
4. **Active agencies only** – in camera discussion to develop and execute **collaborative intervention** within bounds of existing professional responsibilities.

Agencies report back on disposition and **update of de-identified Hub record** – connected to services (70%), informed of services (22%), refused services (5%)



The Ontario Working Group on Collaborative Risk-Driven Community Safety (originating members)

- Toronto Police, City of Toronto, United Way Toronto – FOCUS Rexdale
- Greater Sudbury Police and Partners – OUR SHARED COMMITMENT
- Waterloo Region and Cambridge (Langs) CONNECTIVITY
- Peel Regional Police and Partners – BRAMPTON Initiative

Emerging Models – A Growing List of Interested Communities (joining the OWG)

- The Guelph ENTERPRISE model
- North Bay
- Halton (Milton)
- Ottawa
- OPP (Multiple Jurisdictions)
- Durham Region



Let's Make Healthy Change Happen
Guelph HealthLink

Guelph Community Health Link: ***What Matters to Me***

Ross Kirkconnell

Executive Director

ross.kirkconnell@guelphfht.com



Guelph Community Wellbeing:

Positioned for Collaboration

- One large FHT with over 100,000 patients
- One Community Health Centre
- One acute care hospital
- One inpatient rehabilitation and complex continuing care site
- One CCAC
- One mental health facility
- One community mental health agency
- One hospice organization
- A small number of community support agencies
- Partnerships with broader community services

Guelph Community Wellbeing:

Guelph Health Link

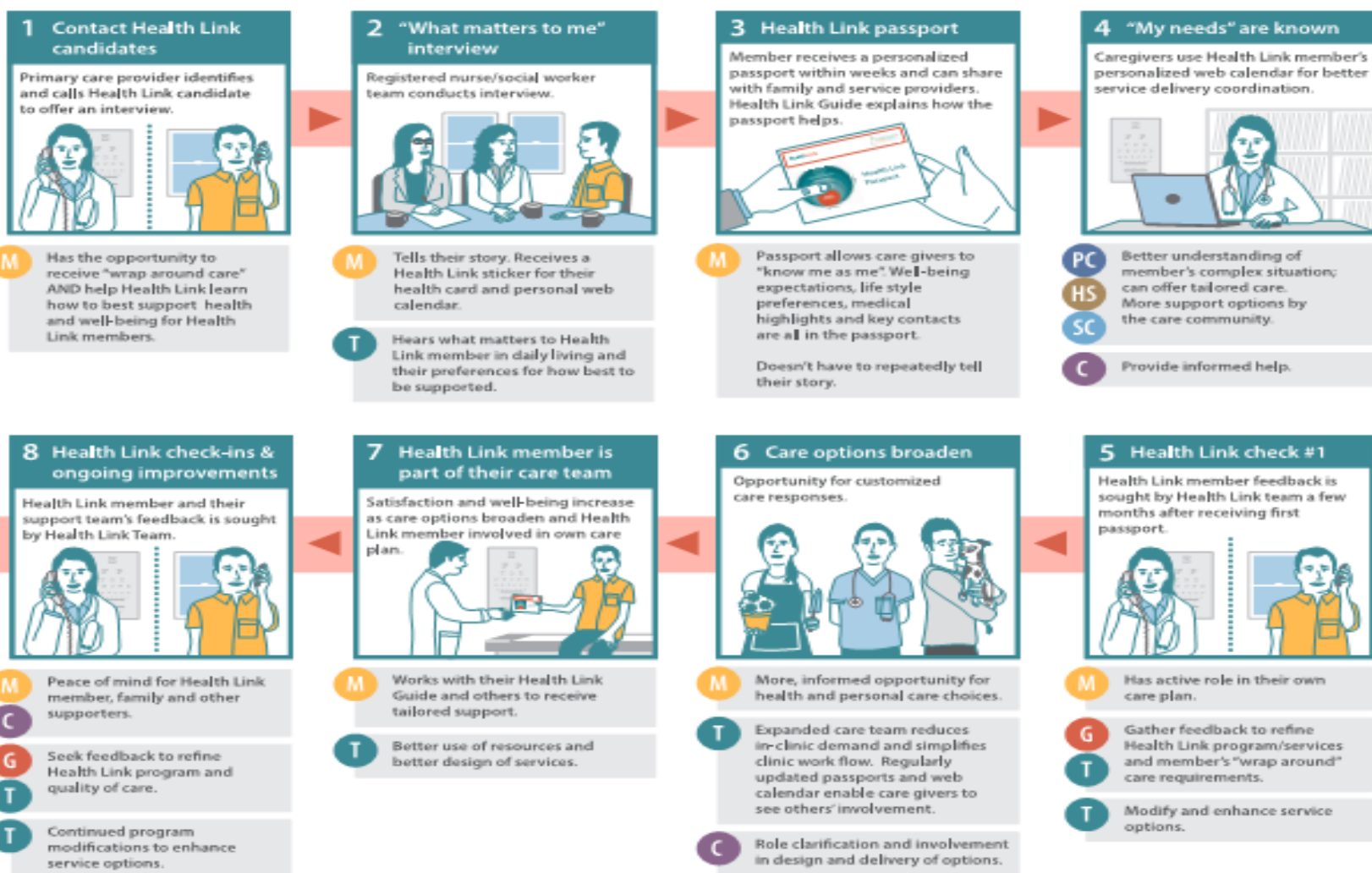
- Identify people who can benefit from Health Link
- *What Matters To Me Interviews* – first step in linking social and medical needs
- Passports for Health Link Members
- Systems respond to Members' needs
- Regular “check-ins”, shared calendar and processes for coordinated care planning

Health Link - Everyone in Guelph Has a Role

Health Link will enable the Guelph care community to develop coordinated "wrap around" care by health, social and community service providers for individuals with complex needs.

Health Link Team

- M** Health Link Member
- PC** Primary Care Practitioners: family practitioner, nurse
- HS** Health Service Providers
- SC** Social & Community Services
- C** Guelph Community: family, friends, neighbours, volunteers
- G** Health Link Guide: primary care team "go to" person.
- T** Health Link Program Team = PC + HS + SC + C



HealthLink



Guelph Health Link: *Members*

- Identification of the “right” individuals: it doesn’t matter who - *Resiliency*
- Understand What Matters to Health Link Candidates
- Engage & support *Patients* to be *Health Link Members* - an active role in their own care and support

Guelph Health Link: *Services*

- Challenge existing rules, norms and processes
- Test a range of practices, tools and readily adopt / modify / drop
- Uncover available informal networks / mechanisms
- Identify changes in organization roles, tools and practices

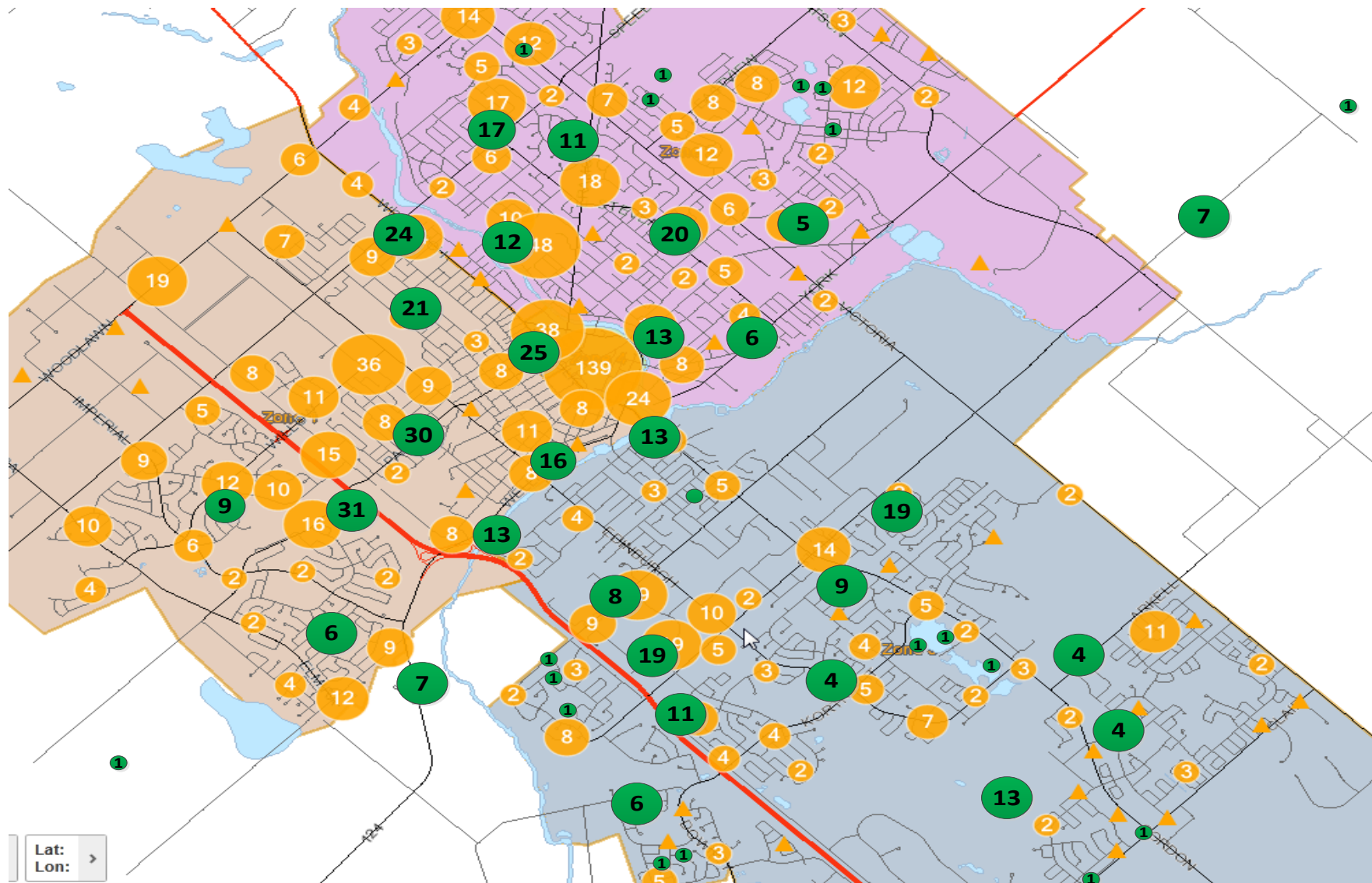
Guelph Health Link: *Systems*

- Use manual / paper based tools to test a range of practices
- Ensure tools support a person-centric approach
- What information NEEDs to be shared?
- Assume province-wide IT solutions will eventually handshake with our no- or low-tech local options

Guelph Health Link:

Where are we now?

- Provider Engagement
- 60 Health Link members and 600+ Candidates
- Over 100 *What Matters to Me* interviews completed
- Round Table Coordinated Care discussions



Guelph
Police Data

Guelph
FHT Data

OCCURANCE PROFILES
GFHT HL Patients
and
Guelph Police Incidents
11/14/2013

Guelph Health Link:

Next Steps

- Enroll interested HL Members on private network to share calendars, passports and care plans
- Broaden community engagement including volunteers
- Qualitative and quantitative analysis
- Round Table discussions to expand coordinated care plans
- Extend HL project resources and tools

HealthLink

Let's Make Healthy Change Happen
Guelph HealthLink

THANK YOU

Question and Answer